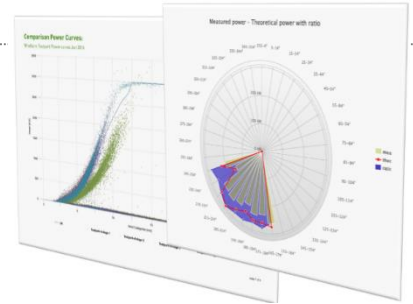




with know-how transfer

O&M Auditory

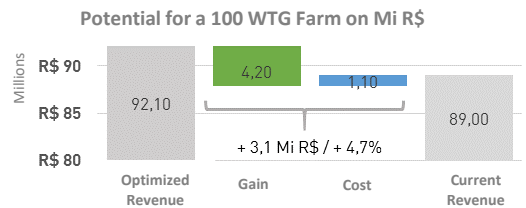
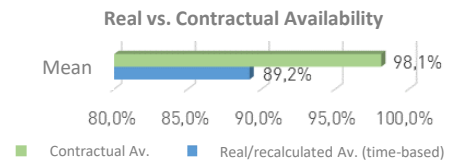
Wind turbines are exposed to enormous tensions during their lifetime. Non-eliminated deficiencies may affect their performance both in short and long sight. In order to reach and keep high availability and the **capacity factors** it is necessary that preventive maintenances are executed regularly and independent and constant monitoring of wind turbines is performed.



Our Services

- ✔ Diligent remote monitoring of assets and contractual demands – 24/7
- ✔ Hotline, we are available to act whenever it is necessary
- ✔ Maintenance management
- ✔ Failure corrections monitoring & management
- ✔ Constant analysis of operational data with complete and safe storage
- ✔ Personalized reports of issues and performance

Business Case



Font: Own study

Your Advantages

- ✔ **Increase of production** and revenues
- ✔ **Downtime reduction** and operational costs optimization
- ✔ Optional technical know-how transfer for **clients wishing to** take responsibility of the Operation **in the future**
- ✔ Failure and issue detection for each component of the wind turbine, **in order to exceed** its lifetime
- ✔ **Complementary to the manufacturer's services**, in order to guarantee transparency and quality

About WINDWERK

WINDWERK is part of German DGE group which has more than 20 years of experience in renewable energies.

It arrived in Brazil in 2016 and established its headquarter in São Paulo and maintains an Operations & Monitoring Center in Florianópolis.

The group daily monitors more than 250 wind turbines and 12MWp of solar energy, with the technology of various manufacturers from Europe and Latin America.